

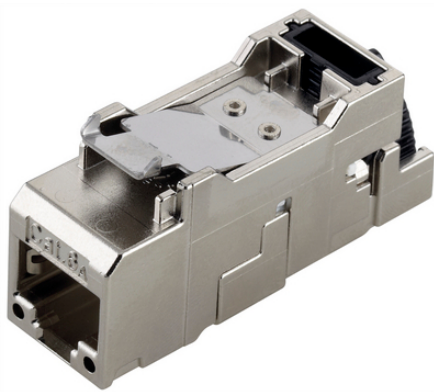
EPIC® DATA RJ45F Cat.6A

RJ45 coupler

The make-up RJ45 module according to IEC 60603-7-51 is suitable for 10 Gb industrial Ethernet. Its housing is made of zinc alloy.

Info

Cat.6_A acc. to ISO/IEC 11801
installation without tools



Supplementary automation components from Lapp



Mechanical and plant engineering



Interference signals

Product features

RJ45 according to IEC 60603-7-51

Qualified for 10 Gigabit/s Ethernet

Housing: zinc die-casting, grey

Suitable for stranded cores with AWG27/7 -22/7 and for solid conductors with AWG26/1- 22/1

Suitable for use in industrial applications

available with colour code T568A or T568B

Norm references / Approvals

Cat.6_A acc. to ISO/IEC 11801

RJ45 acc. to IEC 60603-7-51

UL-listed (E-File E353543)

Technical Data

Classification ETIM 5:

ETIM 5.0 Class-ID: EC001121

ETIM 5.0 Class-Description: Modular connector

Classification ETIM 6:

ETIM 6.0 Class-ID: EC001121

Last Update (24.12.2023)

©2023 Lapp Group - Technical changes reserved

Product Management www.lappkabel.de

You can find the current technical data in the corresponding data sheet.

PN 0456 / 02_03.16

EPIC® DATA RJ45F Cat.6A

Protection rating:	ETIM 6.0 Class-Description: Modular connector IP 20
Ambient temperature (operation):	-40°C to +70°C

Note

Photographs and graphics are not to scale and do not represent detailed images of the respective products. Prices are net prices without VAT and surcharges. Sale to business customers only.

EPIC® DATA RJ45F Cat.6A

Article number	Article designation	Min. outer diameter (mm)	Max. outer diameter (mm)	Max. core diameter including insulation
RJ45 coupler acc. to T568A				
21700611	ED-IE-AX-RJ45F-6A-A-FC	5	9	1.6
RJ45 coupler acc. to T568B				
21700612	ED-IE-AX-RJ45F-6A-B-FC	5	9	1.6

Last Update (24.12.2023)

©2023 Lapp Group - Technical changes reserved

Product Management www.lappkabel.de

You can find the current technical data in the corresponding data sheet.

PN 0456 / 02_03_16